

The Trevarrack

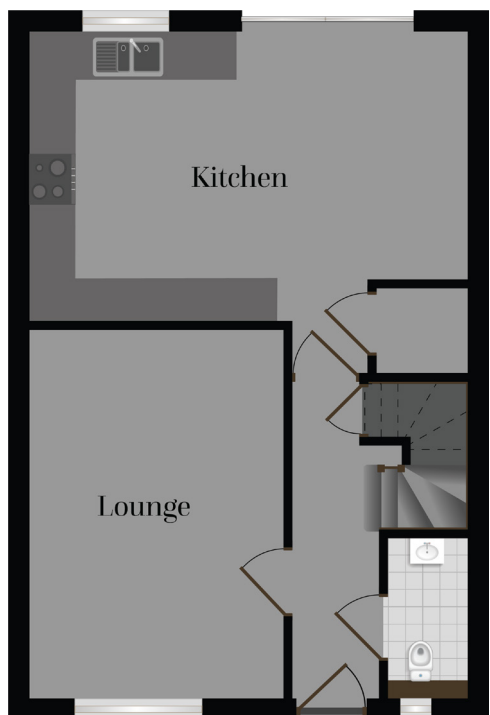
Gwel Fenten - No. 17

Gwel Tregennow - No. 24, 25, 31, 32, 37, 38,
41 & 42

In similar style to Robertsons ever popular Chy-An-Glas, 4 bedroom 'Trevarrack' is also one of the most striking houses on the development. The external appearance of this house combines granite stonework with timber effect cladding, render and a window frontage that spans two floors. Internally, on the ground floor there is a large kitchen/ dining room, lounge and ground floor WC. To the first floor are 4 bedrooms, master en suite facilities and family bathroom. Externally, this home enjoys a garage, a driveway providing off road parking and an enclosed rear garden.

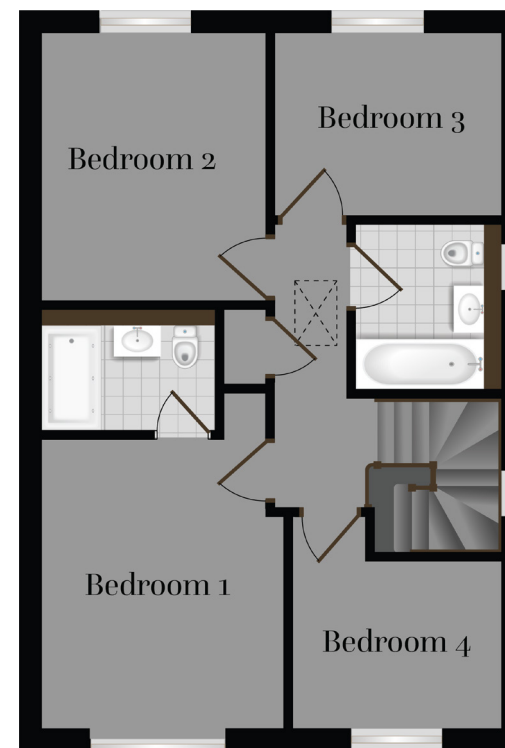


GROUND FLOOR



Kitchen	5.93m x 3.93m	19.52ft x 11.15ft
Lounge	5.02m x 3.42m	17.62ft x 11.94ft

FIRST FLOOR



Bedroom 1	3.75m x 3.08m	12.3ft x 10.1ft
Bedroom 2	3.47m x 2.87m	11.38ft x 9.42ft
Bedroom 3	2.93m x 2.34m	9.61ft x 7.68ft
Bedroom 4	2.71m x 2.13m	8.89ft x 6.99ft

All measurements given are approximate, for further details please contact the agents. Dimensions given are done so in good faith and before construction has commenced. They are approximate and for guidance only and should not be used for furniture or appliance purchases. Purchasers are strongly advised to confirm actual dimensions when the property is nearing completion or is completed.